

MENU

TAKEAWAY ONLY

11:30am - 10:00pm

SEAFOOD

Fish + Chips // \$22

Bentspoke battered fish fillets, chips, lemon and aioli or tartare sauce

Pan Roasted Atlantic Salmon // \$26

Served with fries, lemon, aioli or tartare sauce

Salt and Pepper Calamari // \$19

Bonito flakes, chips, lemon and preserved citrus aioli

Marion's Seafood Box (2ppl) // \$35

Green pepper and bonito fried calamari, prawns, Bentspoke battered fish fillets, chips, lemon and aioli

Marions Seafood Family Box (4ppl) // \$60

Green pepper and bonito fried calamari, prawns, Bentspoke battered fish fillets, chips, lemon and aioli



DRINKS LIST

NON-ALCOHOLIC

Bottled Water // \$4

Soft Drinks // \$4.5

Bundaberg Ginger Beer // \$5

Mount Franklin Sparkling 330ml // \$5

Fuze Peach Iced Tea // \$5.5

BEER & CIDER

Cooper's Light // \$9.5

Corona // \$10

Batlow Cloudy Cider // \$10

Apple Thief Pear Cider // \$10

Bentspoke Barley Griffin // \$10

Bentspoke Crankshaft // \$12

Bentspoke Fixie Ginger Beer // \$14

WINE BY THE BOTTLE

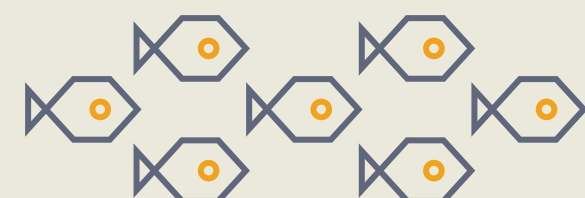
First Creek Sparkling Wine // \$35

Tai Nui Sauvignon Blanc // \$35

Resche Rosé // \$35

Botanica Pinot Noir // \$35

Botanica Shiraz // \$35



BURGERS

Walts Beef Burger // \$26

Walts special blend beef patty, cos lettuce, onion ring, Swiss cheese, tomato and bacon relish, served on a milk bun with fries

Battered Fish Burger // \$26

Bentspoke battered fish fillet, tartare sauce, sliced tomato, lettuce, served on a milk bun with fries

Battered John Dory Burger // \$30

Lettuce, sliced tomato, tartare sauce, served on a milk bun with fries

Grilled Chicken Burger // \$26

Grilled chicken breast, crumbed brie, Apricot jam, slaw, served on a milk bun with fries

Field Mushroom Burger // \$26

Twice cooked field mushroom, pickled slaw, Tomato chutney, marinated piquillo peppers, served on a milk bun with fries

Add extra

Gluten free bun + \$2.5

Chips // \$7 (small) + \$12 (large)

Prawn (2) + \$8

Fish + \$8

House salad + \$12

Slaw salad + \$10

Upgrade to John Dory + \$8



SCAN TO
ORDER

